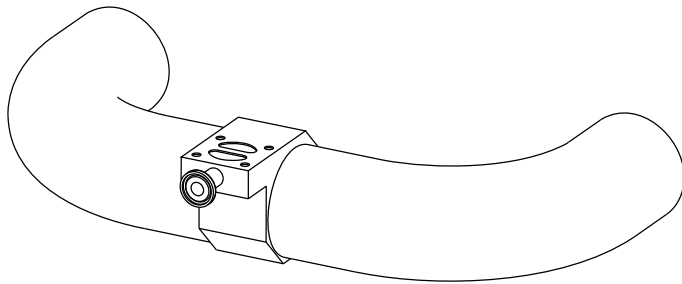
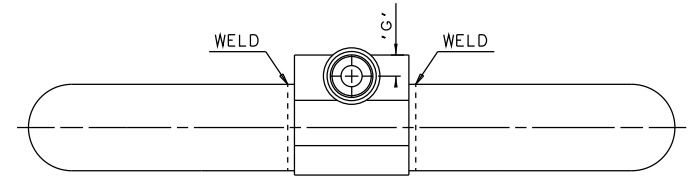
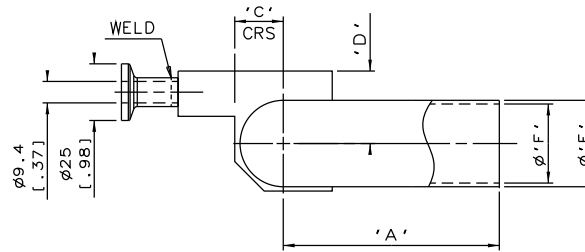
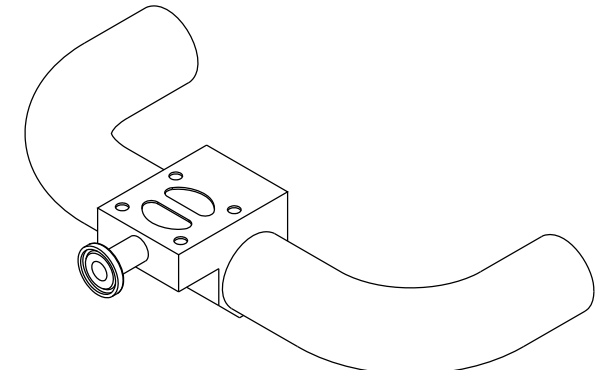
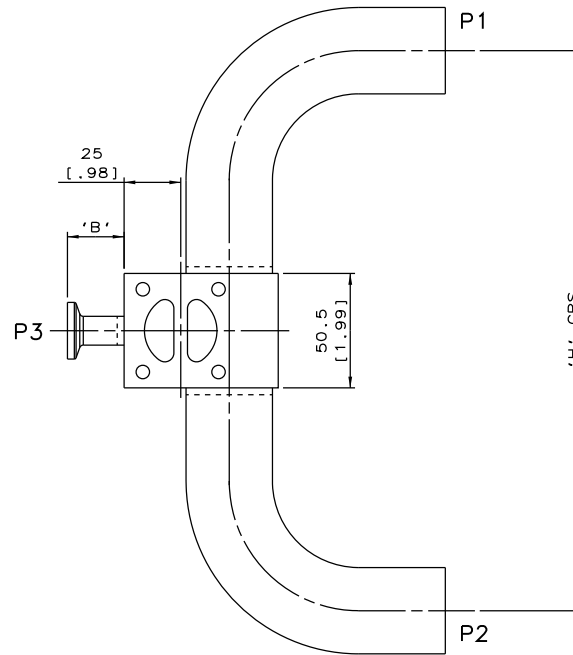


DN15/0.50  
MAINLINE ONLY

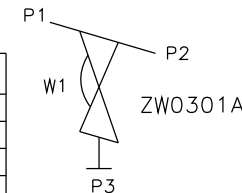


DN80/3.00 TO DN100/4.00  
MAINLINE ONLY



DN20/.075 TO DN65/2.50  
MAINLINE ONLY

MAINLINE SIZE		A		B		C		D		ØE		ØF		G		H		BODY WEIGHT
mm	inch	mm	inch	mm	inch	mm	inch	mm	inch	mm	inch	mm	inch	mm	inch	mm	inch	Kgs
DN15	0.50	76.2	3.00	25.0	0.98	8.0	0.31	16.0	0.63	12.7	0.50	9.4	0.37	9.4	0.37	208.9	8.22	0.6
DN20	0.75	76.2	3.00	25.0	0.98	10.9	0.43	22.0	0.87	19.05	0.75	15.75	0.62	9.4	0.37	208.9	8.22	0.7
DN25	1.00	76.2	3.00	25.0	0.98	14.4	0.57	26.0	1.02	25.4	1.00	22.1	0.87	9.4	0.37	208.9	8.22	0.9
DN40	1.50	95.3	3.75	25.0	0.98	21.4	0.84	32.0	1.26	38.1	1.50	34.8	1.37	9.4	0.37	247.1	9.73	1.1
DN50	2.00	120.7	4.75	25.0	0.98	27.2	1.07	37.2	1.46	50.8	2.00	47.5	1.87	9.4	0.37	297.9	11.73	1.7
DN65	2.50	139.8	5.50	25.0	0.98	33.6	1.32	40.5	1.60	63.5	2.50	60.2	2.37	9.4	0.37	336.1	13.23	2.2
DN80	3.00	158.8	6.25	25.0	0.98	40.5	1.59	45.0	1.77	76.2	3.00	72.9	2.87	9.4	0.37	388.1	15.28	2.5
DN100	4.00	203.2	8.00	25.0	0.98	52.0	2.05	53.8	2.12	101.6	4.00	97.38	3.83	9.4	0.37	476.9	18.78	4.8



ORIENTATION AS  
PER P&ID DIAGRAM  
FOR OPTIMUM  
DRAINABILITY.

The information on this sheet is Private and Confidential and is the property of Crane Process Flow Technologies Limited and must not be published directly or indirectly in any manner whatsoever without the written permission of the Company and must not be used in any way detrimental to their interests.

© Crane Process Flow Technologies

**CRANE** Process Flow Technologies  
A Crane Co. Company

**Saunders**  
The Science Inside

Title  
SCHEDULE OF LEADING DIMENSIONS FOR DN15/0.50  
WEIR POINT OF USE 'T' BODY COMPLETE WITH :  
MAINLINE : BUTT WELD OD TUBE ENDS  
BRANCH : DN15/0.50 HYGIENIC CLAMP END

Drawn RI Date 14.10.11

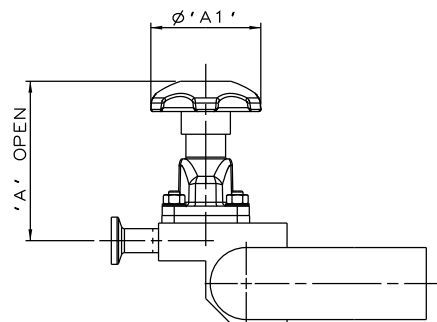
UNCONTROLLED IN  
HARD COPY FORMAT

Checked RND Date 21.03.12

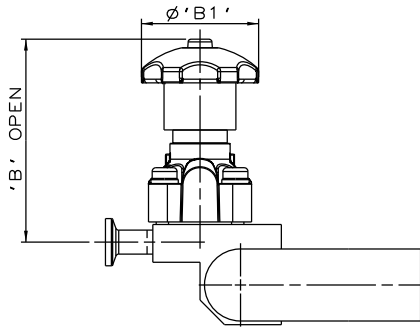
First Angle Projection Method E

Drawing No. WEB-042 Issue. 2

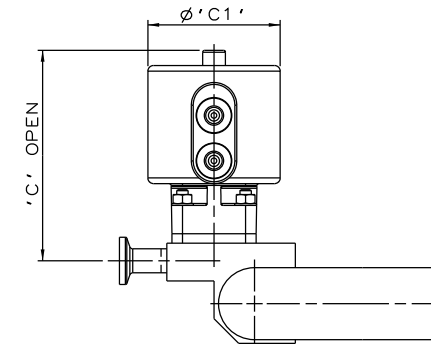
DO NOT SCALE



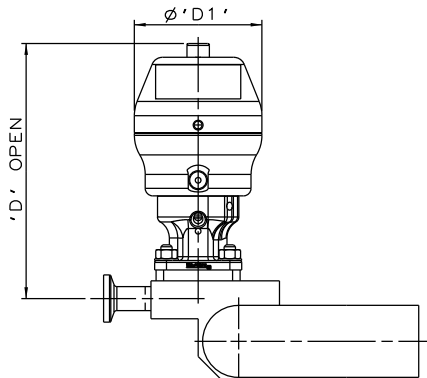
SS NON SEALED  
BONNET ASSEMBLY



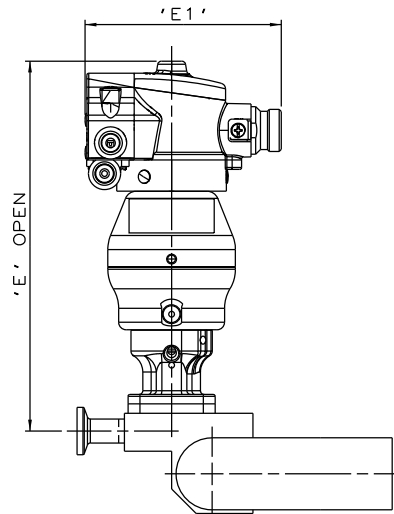
PES BONNET  
ASSEMBLY



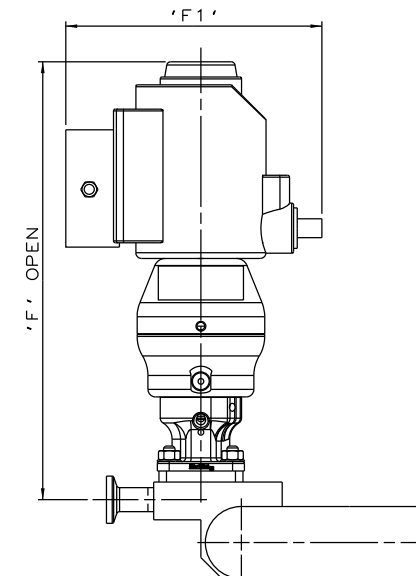
EC ACTUATOR  
(ALL MODES)



\*S360 ACTUATOR



\*S360 ACTUATOR  
WITH M-VUE SENSOR



\*S360 ACTUATOR  
WITH I-VUE SENSOR

The information on this sheet is Private and Confidential and is the property of Crane Process Flow Technologies Limited and must not be published directly or indirectly in any manner whatsoever without the written permission of the Company and must not be used in any way detrimental to their interests.

© Crane Process Flow Technologies

**CRANE** Process Flow Technologies  
A Crane Co. Company

**Saunders**  
The Science Inside

Title  
SCHEDULE OF LEADING DIMENSIONS FOR DN15/0.50 WEIR  
'T' BODY (DN15/0.50 BRANCH) WITH MAINLINE BUTT WELD  
OD TUBE ENDS. BRANCH TRI-CLAMP END.  
FITTED WITH TOPWORKS OPTIONS

Drawn RI Date 28.06.16

Checked RND Date 28.06.16

UNCONTROLLED IN  
HARD COPY FORMAT

First Angle Projection Method E

Drawing No. WEB-042-ASSY  
Issue. 1

\* DIMENSIONS SHOW MAXIMUM ENVELOPE FOR ALL MODES

BRANCH SIZE		A		A1		B		B1		C		C1		D		D1		E		E1		F		F1	
mm	inch	mm	inch	mm	inch	mm	inch	mm	inch	mm	inch	mm	inch	mm	inch	mm	inch	mm	inch	mm	inch	mm	inch	mm	inch
DN15	0.50	84.4	3.32	62.0	2.44	107.4	4.23	62.0	2.44	111.4	4.39	70.0	2.75	135.4	5.33	67.5	2.66	195.7	7.70	103.8	4.09	231.4	9.11	136.0	5.35